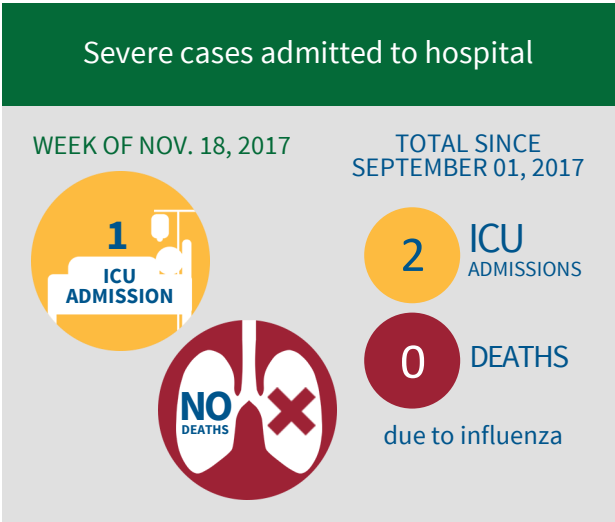
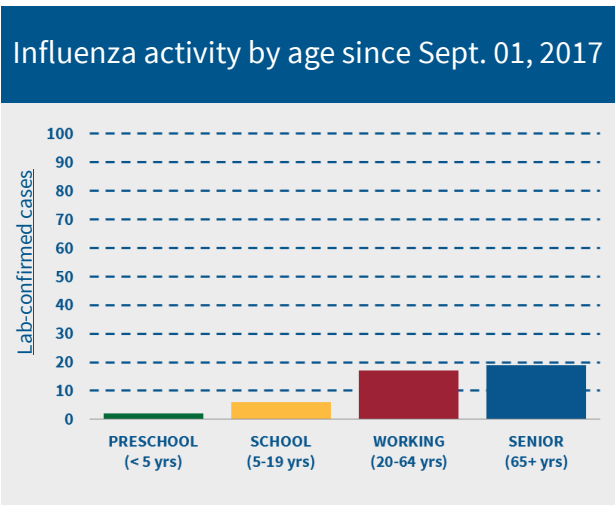
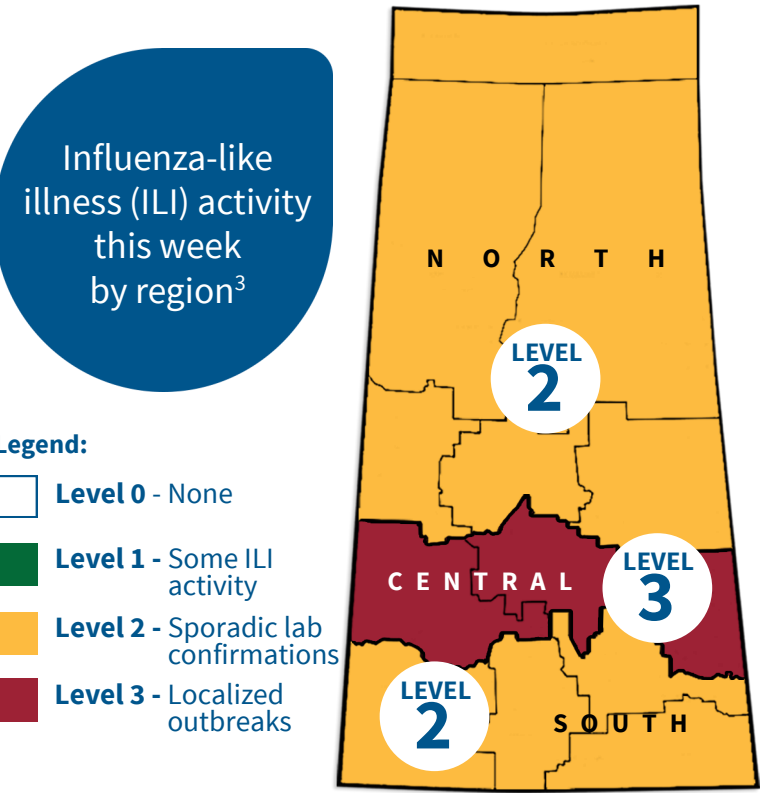
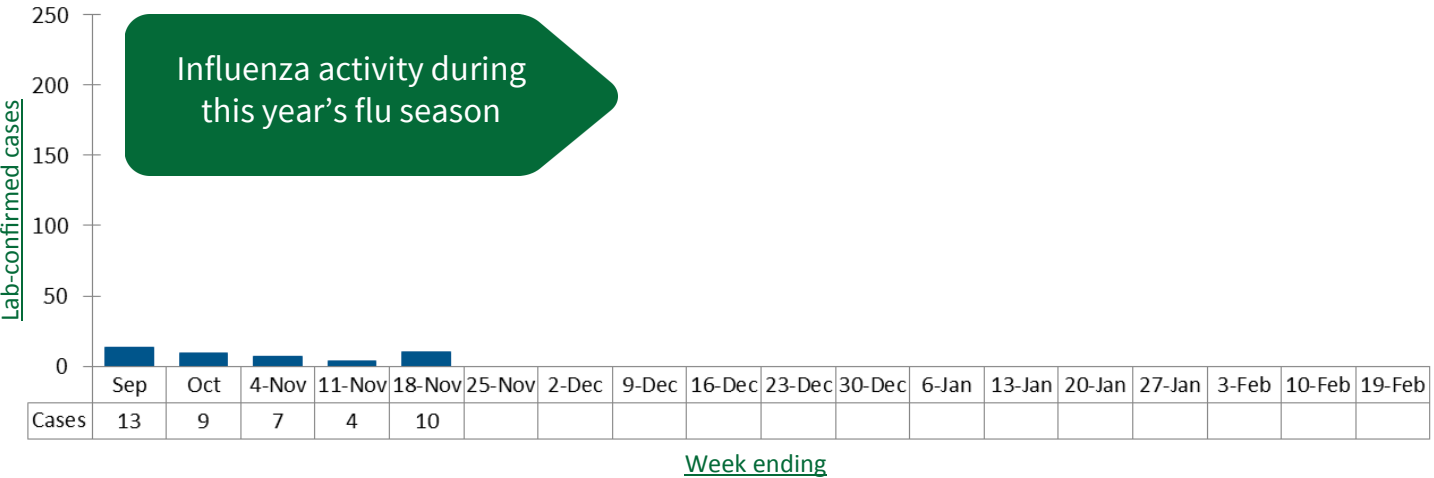
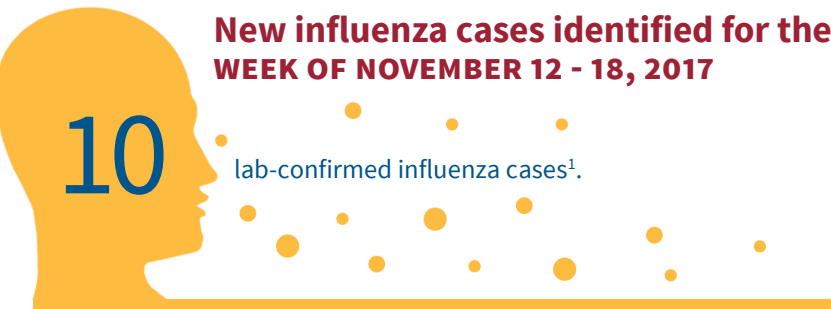


Saskatchewan Weekly Influenza Surveillance Report

WEEK ENDING NOVEMBER 18, 2017



¹Numbers are an underestimate. Not all people seek medical care and are tested for influenza, and not all those who died with influenza-like illness were tested.
²The number of cases for current and recent weeks will increase as lab specimens are received and processed by laboratories.
³Full influenza surveillance had not yet commenced; activity levels were based on positive lab results and reported outbreaks.