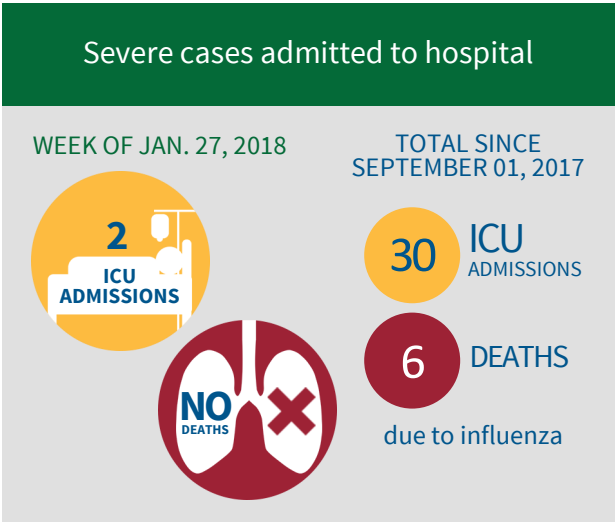
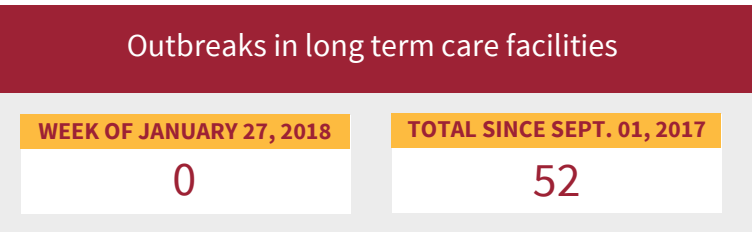
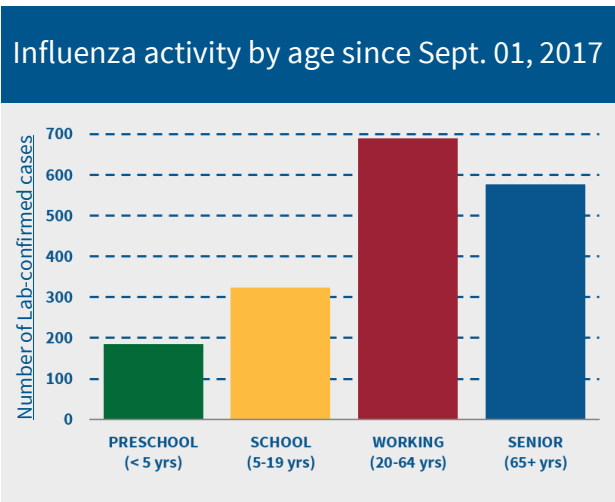
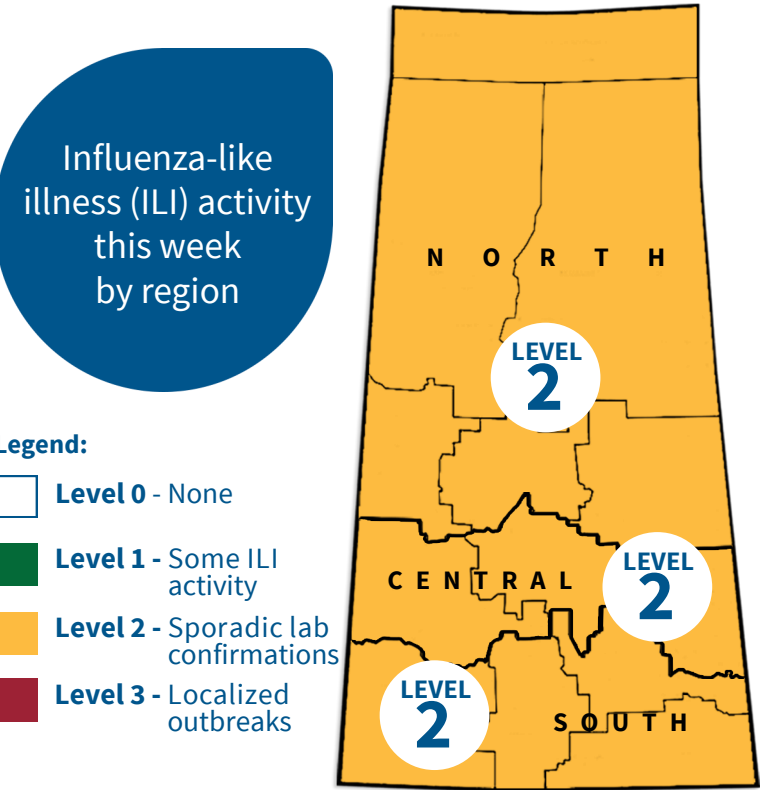
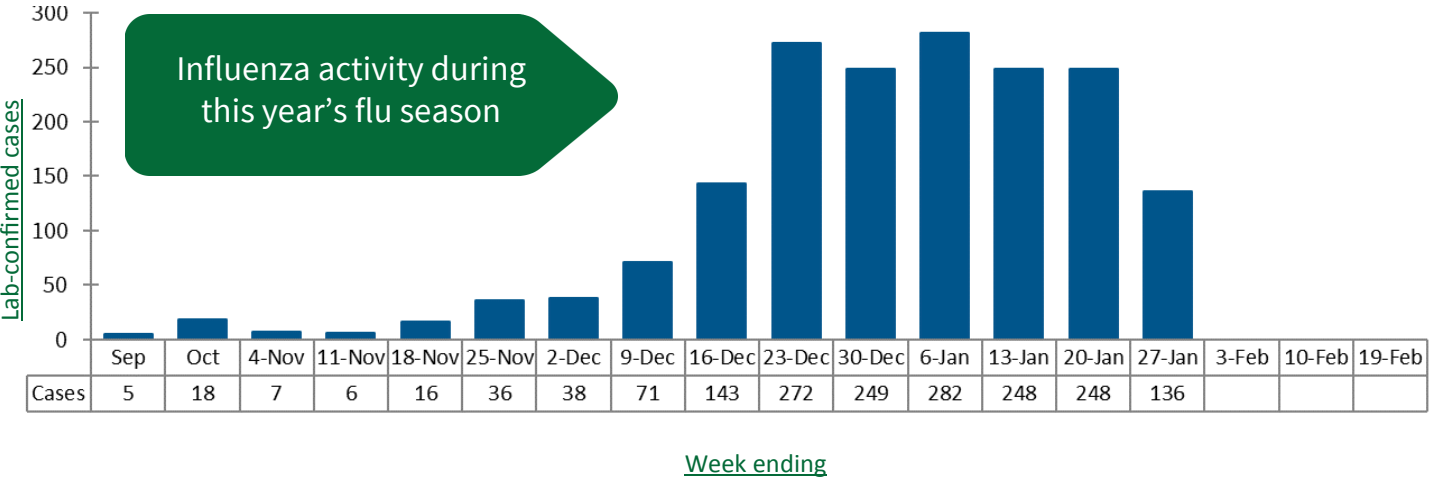
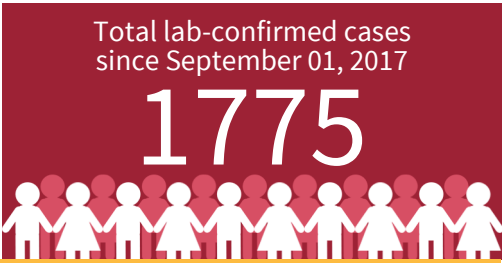
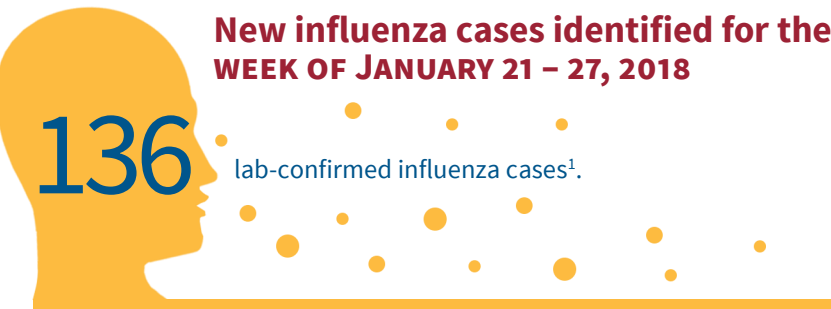


Saskatchewan Weekly Influenza Surveillance Report

WEEK ENDING JANUARY 27, 2018



¹Numbers are an underestimate. Not all people seek medical care and are tested for influenza, and not all those who died with influenza-like illness were tested.
²The number of cases for current and recent weeks will increase as lab specimens are received and processed by laboratories.