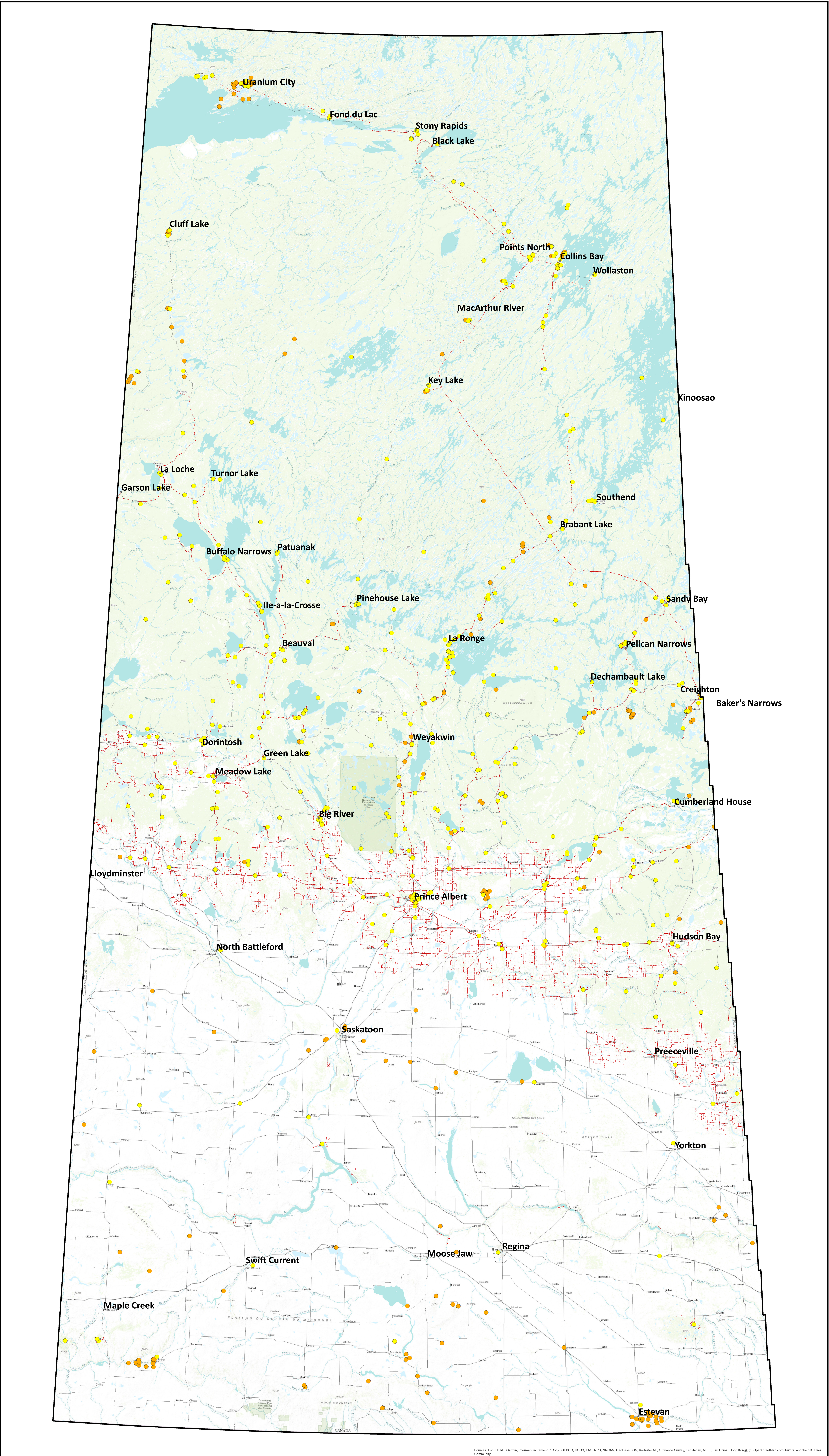


# SPSA Protection Features & Areas

## Wildfire Priorities

1. Human life
2. Communities
3. Major public and industrial infrastructure
4. Commercial timber
5. Structures, natural resources and commercial/industrial operations



## Major Public and Industrial Infrastructure Features

- Public Infrastructure (e.g. power lines, communication towers, airports)
- Industrial Infrastructure (e.g. mines, power generation facilities, mills)