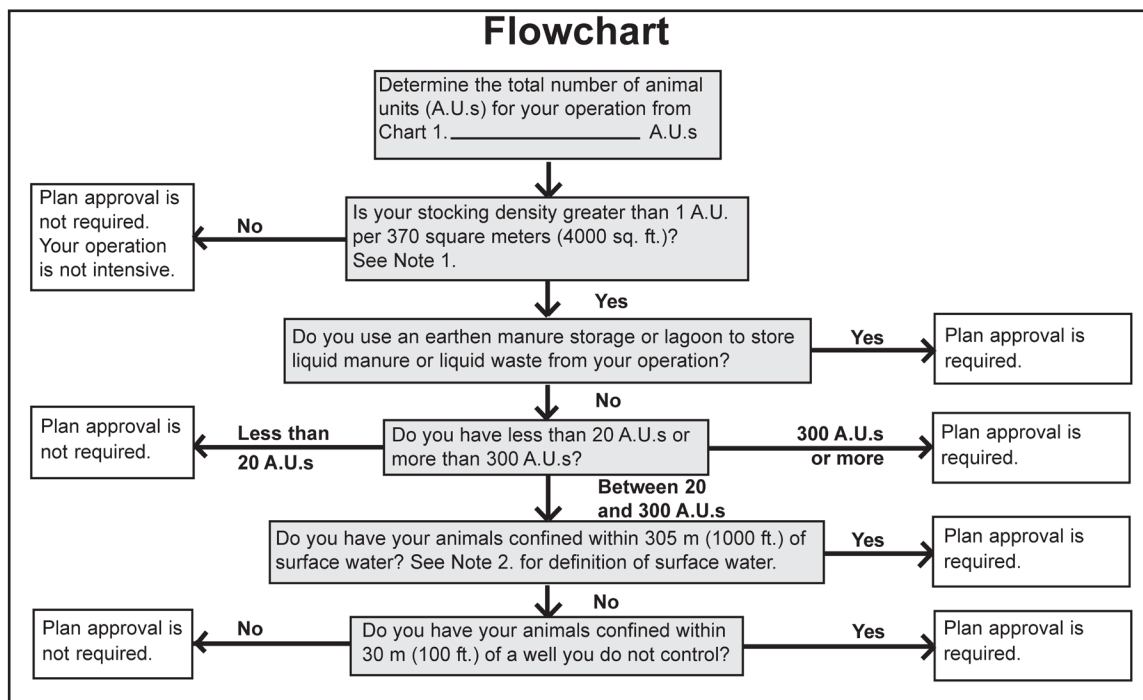


Does my livestock operation require approval?

The Agricultural Operations Act (the Act) is designed to ensure livestock operations develop and operate in a manner that protects surface and groundwater. The Act requires certain types of intensive livestock operations to obtain approval of waste storage and waste management plans. This self-evaluation is intended to assist livestock and poultry producers determine if an approval is required. Producers who require plan approval for their operation are required to submit plans outlining: how they will store manure; how the manure nutrients will be utilized; and how they will handle and dispose of dead animals. Please complete the self-evaluation.

If the following flowchart indicates plan approval under *The Agricultural Operations Act* is required, contact one of the Regional Engineers listed at the end of this fact sheet. The Regional Engineer will inform you of the regulatory requirements and is available to guide you through the steps required to obtain plan approval. If the chart below indicates plan approval is not required and you wish to have this confirmed, contact one of the engineers listed in this fact sheet.



Note 1: Determine the total area of the confinement pens or barn and divide by the total number of animal units determined from Chart 1. If the confinement density is greater than one animal unit per 370 m² (4,000 ft²), your operation is intensive and approval is required.

Note 2: Surface water is defined as “water that is above the surface of the land and in a river, stream, lake, creek, spring, ravine, coulee, marsh or other watercourse where water flows or may flow as a result of runoff (example: valleys).” Surface water that is self-contained on your own property does not normally trigger the need for plan approval. Contact a Regional Engineer for assistance in interpreting surface watercourses.

Chart 1. Animal Units

Type	Kind of Animal	Column A Number of animals for your operation	Column B Number which equals one animal unit (1 A.U.)	Column C Number of animal units (A.U.s) for your operation Column A divided by Column B
Cattle				
	Cows and bulls		1.0	
	Feeder cattle		1.5	
	Replacement heifers		2.0	
	Calves		4.0	
Hogs				
	Sows and boars		3.0	
	Gilts		4.0	
	Feeder pigs		6.0	
	Weanling pigs		20.0	
Poultry				
	Hens, cockerels, capons		100.0	
	Chicks, broiler chickens		200.0	
	Turkeys, geese, ducks		50.0	
Sheep				
	Ewes and rams		7.0	
	Lambs		14.0	
Goats				
	Does and bucks		7.0	
Horses				
	Other than colts or ponies		1.0	
	Colts and ponies		2.0	
Bison				
	Cows and bulls		1.0	
	Calves		4.0	
Elk				
	Cows and bulls		5.0	
	Calves		20.0	
Deer				
	Does and bucks		8.0	
	Deer fawns		32.0	

Total Column C _____

This is the total number of animal units for your operation.

Agricultural Operations Regional Engineers located at these offices are available for consultation:

3830 Thatcher Avenue
Saskatoon, SK
S7K 2H6
306-227-9593
306-221-6245

45 Thatcher Drive East
Moose Jaw, SK
S6J 1L8
306-630-2541
306-539-1712

38 - 5th Avenue North
Yorkton, SK
S3N 0Y8
306-621-1161
306-621-6303