

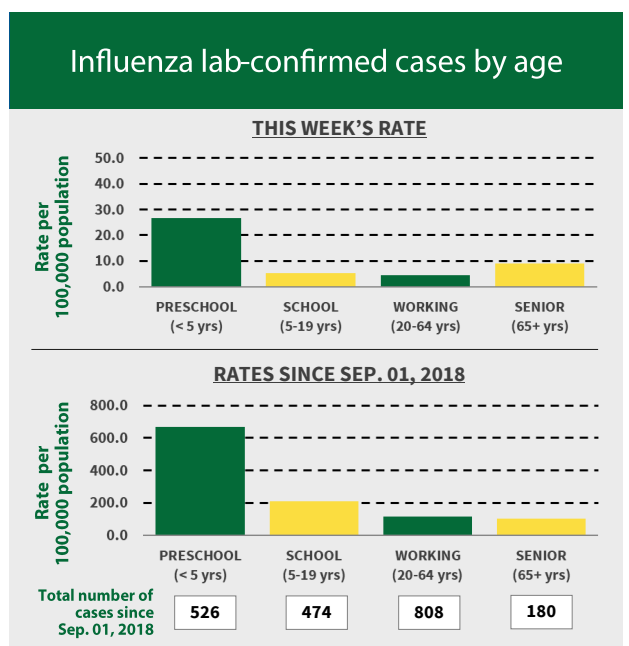
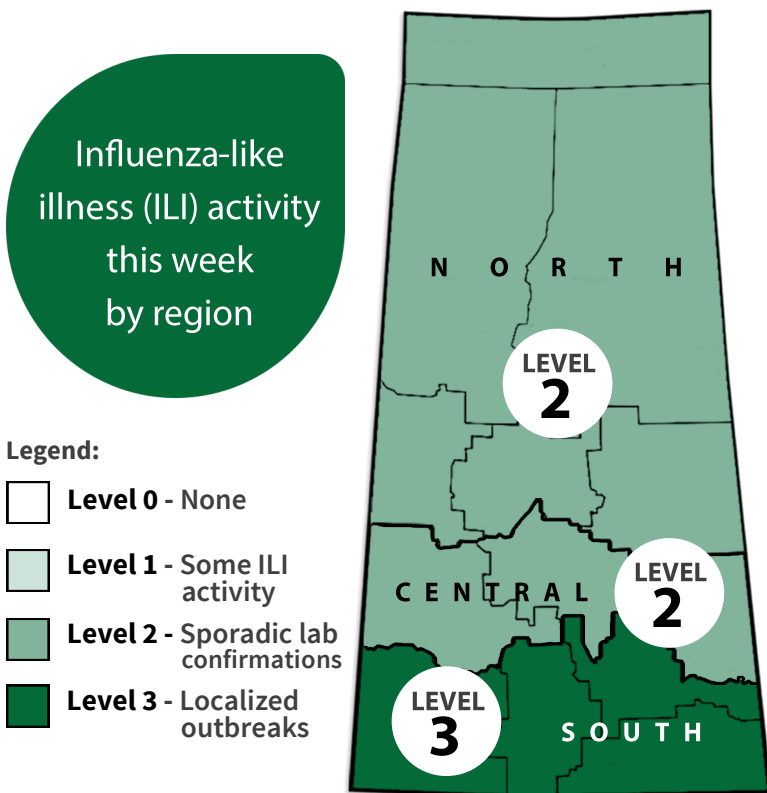
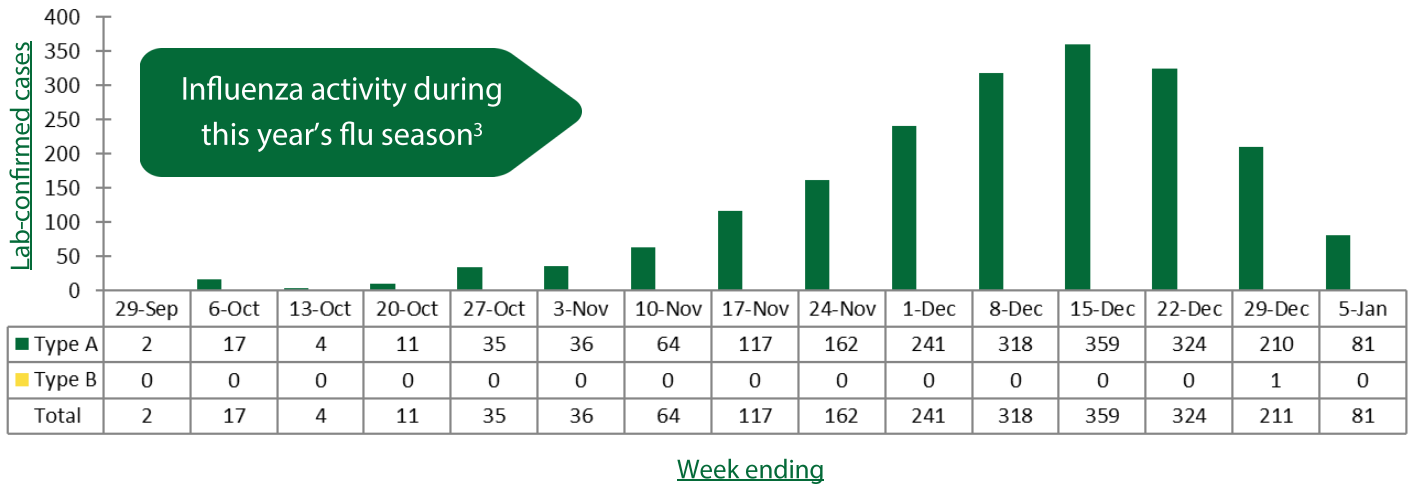
Saskatchewan Weekly Influenza Surveillance Report

WEEK ENDING JANUARY 05, 2019

81 new lab-confirmed influenza cases identified for the WEEK OF DECEMBER 30 - JANUARY 05, 2019¹

Total lab-confirmed cases² since September 01, 2018

1988



Severe cases admitted to hospital

WEEK OF JAN. 05, 2019

NO ICU ADMISSIONS

NO DEATHS

TOTAL SINCE SEPTEMBER 01, 2018

14 ICU ADMISSIONS

6 DEATHS⁴

Outbreaks in long term care facilities

WEEK OF JAN. 05, 2019	TOTAL SINCE SEP. 01, 2018
1	15

¹Not all people seek medical care and are tested for influenza, and not all those who died with influenza-like illness were tested. These data are limited accordingly.
²The number of cases for current and recent weeks will increase as lab specimens are received and processed by laboratories.
³Criteria for Roy Romanow Provincial Laboratory (RRPL) influenza testing changed January 1, 2019.
⁴Only hospital-based deaths are included.